

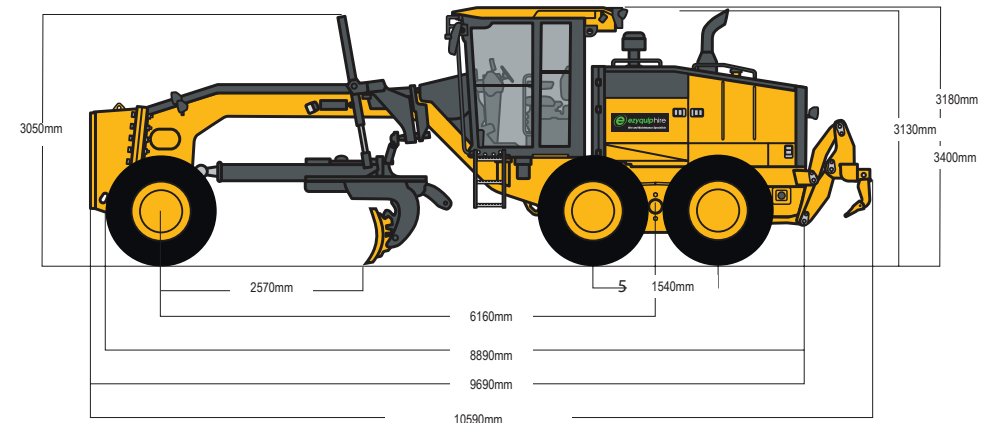
770GP MOTOR GRADER | 17T

PRODUCT SPECIFICATIONS

JOHN DEERE

Engine	
Model	John Deere PowerTech PSX 9.0 L
Base Power (1st gear) - net	127 kW / 170 hp
Displacement	9.0 L / 548 ^{cu}
Net Peak Torque	1235 Nm / 911 lb.-ft
Net Torque Rise	57%
Number of cylinders	6
Rated Speed	2,100 rpm
Aspiration	Series turbocharged, charge-air cooled
Lubrication	Full-flow spin-on filter and integral cooler
Air cleaner with restriction indicator	Dual element, dry
Weights	
Gross Vehicle Weight – Max	21,772 kg
Operating Specifications	
Top Speed – Forward	45.5 km/h / 28.3 mph
Turning Radius - Outside front tyres	7.21 m / 23'8"
Articulation Angle – left/right	22°
Transmission	
1st Forward	4.0 km/h / 2.5 mph
2nd Forward	5.6 km/h / 3.5 mph
3rd Forward	7.7 km/h / 4.8 mph
4th Forward	10.9 km/h / 6.8 mph
5th Forward	16.4 km/h / 10.2 mph
6th Forward	23.2 km/h / 14.4 mph
7th Forward	32.3 km/h / 20.1 mph
8th Forward	45.5 km/h / 28.3 mph
Direct-drive John Deere PowerShift Plus™, modulated shift-on-the-go, Event-Based Shifting (EBS), inching pedal; independent transmission reservoir with separate filtration and cooling system with 125-L/min. (33 gpm) gear pump.	
Blade Range	
Lift - Above ground	490 mm / 19.3"
Blade Side Shift (right or left)	683 mm / 26.9"
Pitch at ground line - forward	42°
Pitch at ground line - back	5°
Shoulder Reach - Outside Wheels	2,083 mm / 6'10"
Bank Cut Angle	90°

Ripper	
Width of cut	2.21m / 7'3"
Number of shanks/teeth	3 (max 5)
Lift - Above ground	602mm / 23.7"
Maximum Penetration	426 mm / 16.8"
Shank Size	61.5 x 133mm / 2.42 x 5.25"
Fuel Burn	
Low	6.9 Litres per hour
Medium	12.9 Litres per hour



DISCLAIMER: This Product Specification Sheet was produced 01/2020. Every effort has been made to ensure that the content is accurate, however the contents are subject to change. Information contained in this Specification Sheet is: for general information only and does not purport to be comprehensive, current only at the time it is placed in this document compiled from manufacturer and industry sources; and not intended to provide nor make any recommendation upon which you should rely for any purpose whatsoever. Ezyquip Hire makes no warranty express or implied, including without limitation any warranty of merchantability or fitness for any particular purpose. Ezyquip Hire shall not be liable for any special, incidental, or consequential damages or loss of profits resulting from use of or misuse of the general information provided in this document.