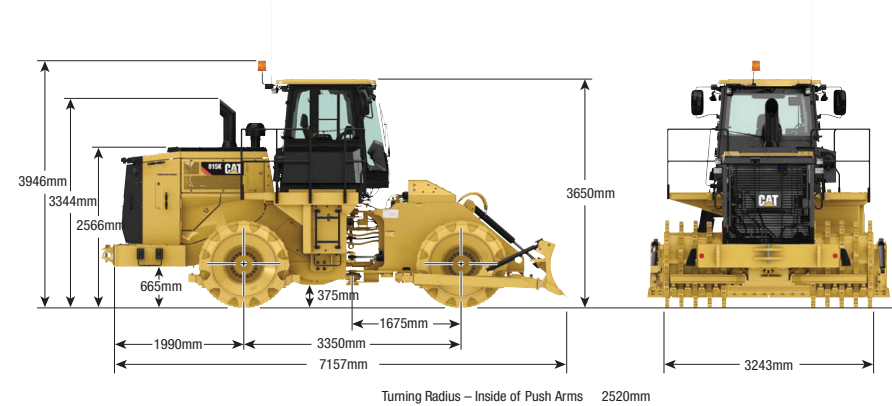


815K COMPACTOR | 20T

PRODUCT SPECIFICATIONS

CAT

Engine	
Model	CAT C7.1 ACERT
Rated Power (SAEJ1349) Tier 4 Final/Stage IV	185 kW / 248 hp
Rated Power (Net ISO9249) Tier 4 Final/Stage IV	185 kW / 248 hp
Gross Power (SAEJ1995) Tier 4 Final/Stage IV	212 kW / 284 hp
Gross Power (ISO14396) Tier 4 Final/Stage IV	204 kW / 274 hp
Maximum Net Torque @ 1,400 rpm	1,219 N m
Torque Rise	52%
Bore	105 mm
Stroke	135 mm
Displacement	7.01 L
High Idle Speed	2,270 rpm
Low Idle Speed	800 rpm
Weights	
Max Operating Weight	20,386 kg
Transmission	
Forward 1	6.7 km/hr
Forward 2	12 km/hr
Forward 3	21.2 km/hr
Reverse 1	7.7 km/hr
Reverse 2	13.7 km/hr
Reverse 3	24.2 km/hr
Fuel Burn	
Low	26.0 - 30.0 Litres per hour
Medium	36.0 - 42.0 Litres per hour
High	44.0 - 47.0 Litres per hour



DISCLAIMER: This Product Specification Sheet was produced 01/2020. Every effort has been made to ensure that the content is accurate, however the contents are subject to change. Information contained in this Specification Sheet is for general information only and does not purport to be comprehensive, current only at the time it is placed in this document compiled from manufacturer and industry sources, and not intended to provide nor make any recommendation upon which you should rely for any purpose whatsoever. Ezyquip Hire makes no warranty express or implied, including without limitation any warranty of merchantability or fitness for any particular purpose. Ezyquip Hire shall not be liable for any special, incidental, or consequential damages or loss of profits resulting from use of or misuse of the general information provided in this document.