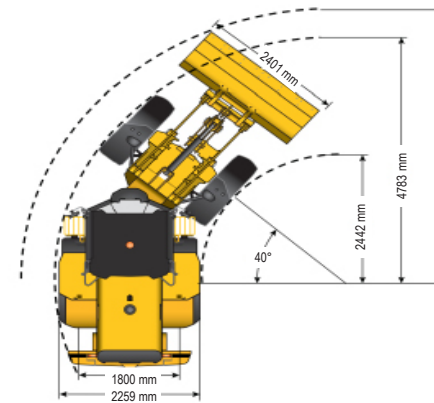
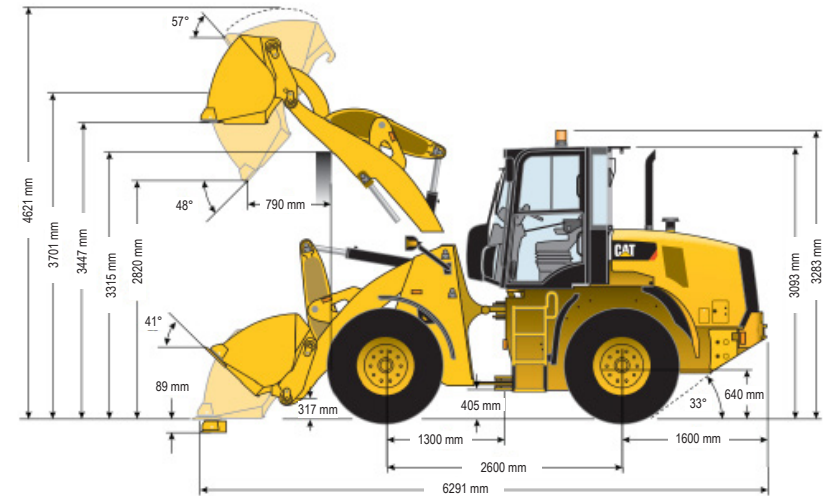


914K WHEEL LOADER | 8T

PRODUCT SPECIFICATIONS

CAT

Engine	
Model	CAT C3.8
Maximum Gross Power - ISO 14396 (DIN)	72.0 kW
Maximum Gross Power - SAE J1995	73.0 kW
Rated Net Power - ISO 9249/EEC	72.0 kW
Rated Net Power - SAE J1349	69.0 kW
RPM at Rated Power	2400.0 RPM
Rated Torque	321.0 Nm
Peak Torque	336.0 Nm
Torque Rise	17%
RPM at Peak Torque	1,500 rpm
Bore	100.0 mm
Stroke	120.0 mm
Displacement	3.8 L
Weights	
Operating Weight - Standard Lift	8,126 kg
Operating Weight - High Lift	8,181 kg
Buckets	
Bucket Capacities - General Purpose Bucket	1.1 - 2.5 m ³
Operating Specifications	
Clearance: Full lift and 45° dump	2,837 mm
Full Turn Tipping Load - High lift	3,902 kg
Full Turn Tipping Load - Standard lift	4,780 kg
Reach: Full lift and 45° dump	790 mm
Steering articulation angle each direction	40 Degrees
Fuel Burn	
Low	7.0 - 10.1 Litres per hour
Medium	10.1 - 13.1 Litres per hour
High	13.1 - 16.1 Litres per hour



DISCLAIMER: This Product Specification Sheet was produced 01/2020. Every effort has been made to ensure that the content is accurate, however the contents are subject to change. Information contained in this Specification Sheet is: for general information only and does not purport to be comprehensive, current only at the time it is placed in this document compiled from manufacturer and industry sources; and not intended to provide nor make any recommendation upon which you should rely for any purpose whatsoever. Ezyquip Hire makes no warranty express or implied, including without limitation any warranty of merchantability or fitness for any particular purpose. Ezyquip Hire shall not be liable for any special, incidental, or consequential damages or loss of profits resulting from use of or misuse of the general information provided in this document.