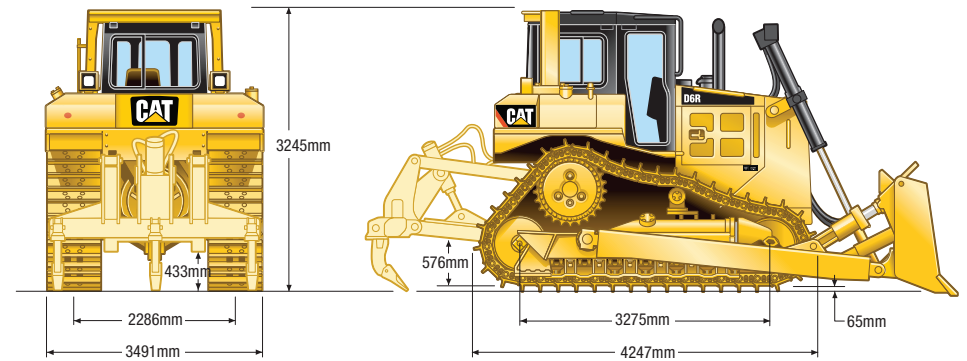


D6R TRACK-TYPE TRACTOR | 18T

PRODUCT SPECIFICATIONS

CAT

Engine			
Model	CAT C9 ACERT		
Maximum Gross Power @ 1,800 rpm - ISO 14396	152 kW / 204 hp		
Maximum Net Power @ 1,800 rpm - ISO 9249	139 kW / 186 hp		
Rated Gross Power @ 2,000 rpm - ISO 14396	148 kW / 198 hp		
Rated Net Power @ 2,000 rpm - ISO 9249	131 kW / 175 hp		
Bore	112 mm / 4.4"		
Stroke	149 mm / 5.9"		
Displacement	8.8 L / 537 ^{ns}		
Weights			
Operating	18,225 kg / 40,179 lb		
Transmission			
1st Forward	3.8 kph / 2.3 mph	1st Reverse	4.8 kph / 3 mph
2nd Forward	6.6 kph / 4.1 mph	2nd Reverse	8.4 kph / 5.2 mph
3rd Forward	11.5 kph / 7.1 mph	3rd Reverse	14.6 kph / 9.1 mph
Blades			
S-Blade Capacity	3.89 m ³ / 5.09 yd ³		
S-Blade Width	3,360 mm / 11 ft		
Fuel Burn			
Low	14.8 - 21.2 Litres per hour		
Medium	21.2 - 27.3 Litres per hour		
High	27.3 - 33.7 Litres per hour		



With following attachments add:

Drawbar	251 mm (9.9 in)
Winch	397 mm (15.6 in)
S Blade	1218 mm (48 in)

DISCLAIMER: This Product Specification Sheet was produced 01/2020. Every effort has been made to ensure that the content is accurate, however the contents are subject to change. Information contained in this Specification Sheet is: for general information only and does not purport to be comprehensive, current only at the time it is placed in this document compiled from manufacturer and industry sources; and not intended to provide nor make any recommendation upon which you should rely for any purpose whatsoever. Ezyquip Hire makes no warranty express or implied, including without limitation any warranty of merchantability or fitness for any particular purpose. Ezyquip Hire shall not be liable for any special, incidental, or consequential damages or loss of profits resulting from use of or misuse of the general information provided in this document.