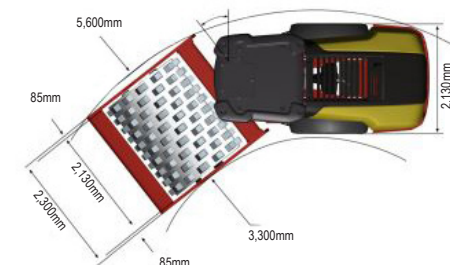
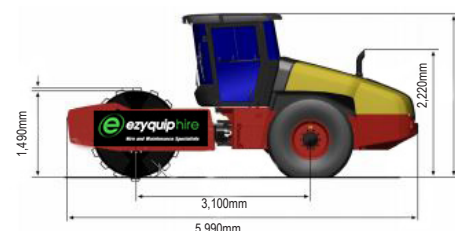


CA2500PD VIBRATORY ROLLER | 11T

PRODUCT SPECIFICATIONS

DYNAPAC

Type	Pad Foot
Masses	
Operating Mass (incl. Cab)	11,000 kg
Traction	
Speed Range (km/ h)	5/6/7/12
Vertical Oscillation	±9°
Tyre Size (8 ply)	23,1x26 TR
Theor. Gradeability	57%
Compaction	
Centrifugal Force - At high amplitude	260 kN
Centrifugal Force - At low amplitude	150 kN
Nominal Amplitude - High	2.01
Nominal Amplitude - Low	1.1 mm
Engine	
Manufacturer / Model	Cummins QSB 4.5
Type	Water cooled with After Cooler
Rated Power - SAE J1995	82 kW
Fuel Tank Capacity	272 L
Fuel Burn	
Low	12.9 Litres per hour
Medium	17.16 Litres per hour
High	21.46 Litres per hour



DISCLAIMER: This Product Specification Sheet was produced 01/2020. Every effort has been made to ensure that the content is accurate, however the contents are subject to change. Information contained in this Specification Sheet is: for general information only and does not purport to be comprehensive, current only at the time it is placed in this document compiled from manufacturer and industry sources; and not intended to provide nor make any recommendation upon which you should rely for any purpose whatsoever. Ezyquip Hire makes no warranty express or implied, including without limitation any warranty of merchantability or fitness for any particular purpose. Ezyquip Hire shall not be liable for any special, incidental, or consequential damages or loss of profits resulting from use of or misuse of the general information provided in this document.